



Promoting the networking of women who work in the short term insurance industry in Gauteng, South Africa.

WOMEN 2 WOMEN



The Year of YES

The Year of Yes continues

GWII Presents: Career Wellness Challenge – April 2024 - sponsored by Norton Rose Fulbright South Africa

This month, we look at career wellness and how to achieve emotional intelligence as a springboard to success! Part of this Challenge will include a FREE EQ test by EVOLVE EQ worth R 799!

In addition: the GWII will host 2, online webinars, in collaboration with EVOLVE EQ, which will focus on professional growth and unlocking your full potential.

What can you expect?

[April Challenge](#)

**Celebrating a decade of empowerment:
GWII marks 10 years of success**

OUR FOUNDING MEMBERS



Annelot Schrijver



Carla Jordan



Charlene Webster



Janine Smith



Junia Morare



Michaela Phillips



Michelle Schreuder-Rankin



Rianet Whitehead

OUR PAST AND PRESENT PRESIDENTS



Annelot Schrijver
2013-2014



Charlene Webster
2015-2016



Nicky Eveleigh
2017-2018



Rianet Whitehead
2019



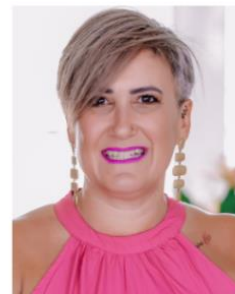
Catherine Pienaar
2020-2021



Catherine Naidoo
2022



Shaazia Khan
2023



Catherine Albertyn
2024



Charlene Webster, GWII Founding Member and Past Chairlady, reflects on GWII's decade of success

As Gauteng Women in Insurance (GWII) marks its tenth anniversary, Charlene Webster, GWII Founding Member and Past Chairlady, reflects on GWII's decade of success.

"Double digits, a decade, 10 years on, what an exciting milestone to reach! It stemmed from a small gathering of four women bemoaning the fact that we don't play golf, don't cycle and very rarely make the effort to get out there and meet other women doing what we do, insurance. What followed was... [Read more](#)

CPD Session – Decrypting cyber: translating cyber-babble and navigating the digital frontier

On the topic of decrypting cyber: translating cyber-babble and navigating the digital frontier, Gauteng Women In Insurance (GWII) hosted a Continuous Professional Development (CPD) session on 12 March, proudly sponsored by Camargue. During the session, esteemed panellists... [Read more](#)



GWII Event: Vote for YOU this 2024

Gauteng Women in Insurance (GWII) kicked off its first networking event of 2024 with an empowering theme: 'Vote for YOU this 2024'. The highlight of the evening was a captivating speech by Ferial Haffajee, an esteemed South African editor and journalist currently serving as Associate Editor at the Daily Maverick... [Read more](#)

Women excel in 3 out of 4 areas of money management

Product Head for FNB, Ester Ochse argues that women might just be better at managing their money than their male counterparts. Her reasoning behind this is simple: out of the four areas of money management listed by the bank – budgeting, credit, savings and... [Read more](#)



What to do about burnout if quitting is not an option

Once burnout sets in, it can be difficult to see the light at the end of the tunnel. You may feel emotionally exhausted and full of dread; you may feel hopeless, with no motivation or energy to keep going, says Cassandra Aasmundsen-Fry... [Read more](#)

Is your social media your biggest social buddy?

In a world buzzing with digital connections, it's easy to get caught up in the whirlwind of social media. But let's pause for a moment and Let's Talk: is your online presence overshadowing your real-life connections? How do you know if you're overusing social media... [Read more](#)



Legal talk: Understanding the basics of defamation

We often hear the word "defamation" and do not always understand what is meant with it. Generally, defamation relates to some form of negative remark published about someone. Before getting into the details of defamation, it is important to note that defamation can be difficult to prove... [Read more](#)



Leaderwalk
12 April



THE FUTURE OF LEADERSHIP IS COLLEGIALLY



GWII LEADERWALK SERIES PRESENTS



What does it take to be an effective leader in today's business world? Mike Teke, the CEO of Seriti and well-known entrepreneur, has more experience than most as a leader. His opinion is heeded and followed by many. In *The Future of Leadership is Collegiality*, Mike shares some of his insights on leadership and the approaches that have made him successful. He believes that 'young leaders emulate and mimic experienced leaders – whether the habits they are copying are right or not so right. This happens because young leaders search for ways and means to be recognised, advance in their careers, or be seen as impressive leaders.'

He discusses concepts such as collegiality, fraternisation, ingratiation and self-respect, and illustrates his ideas with examples of South African and world leaders. On his own journey towards becoming a powerful leader, it was inculcated in him that one had to be 'tough and ruthless' in their approach to leading. However, times have moved on and the game has changed!

To be effective and deliver consistently in business, Mike has realised that collegiality is the way of the future. 'There is no need to scream at others, bang tables or use foul language!' He believes that collegiality works everywhere – as long as one is willing to lead effectively.

ABOUT THE LEADERWALK CONCEPT

The Leaders' Walk has been created by Business Engage to nurture the development of aspiring leaders and to help them unlock their future potential. This is done during an event that will encourage meaningful engagement and dialogue.

EVENT 12 APRIL 2024

VENUE: The Venue Summit Place, 39 Melrose Boulevard, Ground Floor, Melrose Arch

AGENDA

- 08:30: Breakfast & Networking
- 09:00: Welcome & Format
- 09:10: Guest Speaker: Mike Teke
- 09:50: Q&A
- 10:05: Breakaway session
- 10:45: Session Feedback
- 10:55: Closing

RSVP admin@gwii.co.za



MEET MIKE TEKE

Mike Teke is the CEO of Seriti Resources Holdings which he co-founded in 2018. His qualifications include a BA (Ed), BEd, BA (Hons) and an MBA.

Mike has held HR roles at several companies including Unilever from 1992 to 1994, Bayer from 1994 to 1999, BHP Billiton from 2000 to 2005 and Impala Platinum from 2005 to 2007.

MAIN SPONSOR



CO-SPONSORS



NORTON ROSE FULBRIGHT

In collaboration with



SEE THE 2024 CALENDAR HERE

UPCOMING EVENTS

CPD 2
15 May

Mix n Mingle 2
5 June

2024 GWII MEMBERSHIP

The GWII membership for 2024 is R400. Should you wish to pay the membership fee of R400, our account details are as follows:

Account Name: G W I I Group NPC
Banker: FNB
Account No: 62436595691
Account Type: Current Account
Branch Name: Client Resolution Centre
Branch Code: 260231

Please use your name AND your cell number as a reference.

If your company is willing to pay for your membership please contact admin@gwii.co.za for an invoice to be made out to your company.

We will need:

- Company name;
- PO Box address; and
- VAT no if there is one.

BENEFITS OF BELONGING

- **Belong** to a dynamic, professional insurance industry association that promotes the personal and professional growth of women;
- **Share** your knowledge and expertise with industry peers and fellow members;
- **Participate** and build connections through networking at industry events;
- **Cultivate** professional self-confidence and personal friendships;
- **Learn** through speakers, workshops and articles designed to broaden your knowledge, enhance your position and meet professional needs; and

- **Give back** to the communities that we serve through our charity initiatives at our events.



Designed with BEE

[Unsubscribe](#) • [Update Profile](#) • [View PDF](#) • [Pause Subscription](#) • [View Online](#)

This email was sent to [{{contact.contact_email}}](#) on 03-04-2024 by Gauteng Women In Insurance, 16A Wag 'n Bietjie Street Wilropark Roodepoort, Gauteng, 1724

Gauteng Women In Insurance is intended for opt-in communication only. If you feel this email is unsolicited please [report it](#) to us

Email Powered By [Everlytic](#)

