



Promoting the networking of women who work in the short term insurance industry in Gauteng, South Africa.

WOMEN 2 WOMEN



The Year of YES

The Year of Yes continues

GWII Presents: Environmental Sustainability
- June 2024

Environmental sustainability involves making responsible choices that ensure the long-term health of our planet. There is power in collective action! When individuals unite towards a shared vision or goal the collective voice has the potential to make a lasting impact and change. We, as women, have the power to demand change in all our environments – professionally and in our homes.

Why does this matter?

Our world faces severe environmental challenges, including climate change, loss of biodiversity, and resource depletion.

Join us in taking action by clicking on the button below to find out what the June challenge will entail!

[June Challenge](#)



Janine Smith, GWII Founding Member reflects on GWII's decade of success

It has been a great privilege to be a founding member of the Gauteng Women in Insurance. As a woman who started in the industry in 1995, I have witnessed how demanding the industry can be and how women in the industry have faced numerous challenges over the years.

Over the past decade, the industry has undergone a significant transformation. Women have increasingly... [Read more](#)

CPD Session – Environmentally Exposed – The Impacts to The Environment Following a Spill

On the topic of "Environmentally Exposed – The Impacts to The Environment Following a Spill", Gauteng Women In Insurance (GWII) hosted a Continuous Professional Development (CPD) session on 22 May, proudly sponsored by EnviroSure.

During the session, Adelle Hartley, General Manager of EnviroSure gave an overview of Environmental legislation, Nema Section 30 reporting requirements including fines and penalties for contravening the... [Read more](#)





Persisting gender gaps in female executive leadership

The Global Gender Gap Report highlighted the need for renewed and concerted action due to the persistence of large gender gaps worldwide. In terms of closing the gender gap, South Africa ranked 20th overall with 78% gap closure... [Read more](#)

The unpaid work burden: how women can protect themselves financially

The stark reality is that, in South Africa, the burden of unpaid work is still largely shouldered by women. And for as long as this status quo prevails, women will struggle to achieve true financial freedom... [Read more](#)

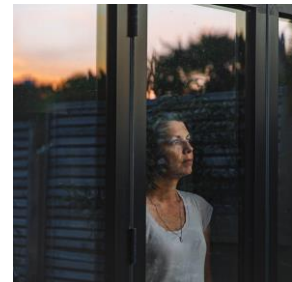


Can menopause cause dry eyes? Doctors reveal the truth behind the symptom

You might not think having dry eyes has anything to do with menopause, but this is actually one of the more unexpected symptoms. During the various stages of menopause... [Read more](#)

Helpful tips for dealing with anxiety

Anxiety can be caused by many factors, like stress at work or school, illness, and the loss of a loved one. You might have anxiety because your brain is wired that way; it's natural for some people to worry more than others. Given the ongoing uncertainties that are occurring in our lives and culture, anxiety is at an all-time high, which is forcing many of us to prioritize our mental health. It's not clear exactly... [Read more](#)



Legal talk: What happens to your social media accounts after you pass away?

While you may physically die and no longer exist in the real world, your digital presence will survive, especially if you have been extremely active on the numerous social media platforms that are out there. So, the question is: what happens to your social media profiles after you've died... [Read more](#)



SEE THE 2024 CALENDAR HERE

Year of Yes - CPD Webinar
4 June



Gauteng Women in Insurance invites you to a webinar...



Hidden in plain sight: Waste pickers' environmental contributions

SPEAKER:

Professor Melanie Samson, Associate Professor of Sociology, Department of Sociology, Faculty of Humanities, UJ



Melanie Samson: For the past decade, Melanie's research has arisen out of and contributed to her political work accompanying reclaimer (waste picker) movements in South Africa and globally. Her academic work focuses on the political ecology of reclaiming, the production of value by non-wage workers, and reclaimers' struggles to transform the economy, polity, and society. Melanie facilitated the multi-party participatory process to develop the South African government's "Waste Picker Integration Guideline" and is the primary author of the Guideline.

Join Us in Taking Action!

Date: Tuesday 4 June

Time: 9:00 – 10:00 am

Platform: Zoom

CPD HOURS

Accredited for 1 CPD hour by the IISA

Proudly sponsored by

CHARTER RISK

Authorised Financial Services Provider - FSP No 51476



Building Capacity for Waste Picker Integration

Mix n Mingle - GWII Golf Masterclass

5 June

GWII GOLF MASTERCLASS

The Gauteng Women in Insurance is hosting a one-day golf masterclass, aimed at non-golfers, to teach women the rules and fundamentals of the game and provide practical experience on the golf course. The event will include networking opportunities with industry experts and professional golfers.

This event provides a unique opportunity for women in the insurance industry to learn a new skill, improve their game, make connections with other professionals, and have fun on the golf course.



Please note, pre-payment will secure your spot.
No payment will be accepted at the event. **"No pay, no play"**



DATE

5 JUNE 2024

TIME

13:00 for
13:30 – 20:00

VENUE

WORLD OF GOLF
Cnr Woodmead &
Maxwell Drive
Waterfall, Midrand

DRESS CODE

Activewear

ENTRANCE

R495 PP

Golf clubs will be provided

RSVP

20 MAY 2024
admin@gwii.co.za



MAIN SPONSOR



CO-SPONSORS



COMPLIMENTARY SPONSORS



PRIZE SPONSORS



SUPPORTING LOGISTICAL SPONSOR



UPCOMING EVENTS

Year of Yes - Environmental Sustainability Fashion Show
25 June

Leaderwalk

18 July

GWII-IIG Woman's Day Event
7 August

Leaderwalk
29 August

CPD

11 September

Mix n Mingle

19 September

2024 GWII MEMBERSHIP

The GWII membership for 2024 is R400. Should you wish to pay the membership fee of R400, our account details are as follows:

Account Name: G W I I Group NPC
Banker: FNB
Account No: 62436595691
Account Type: Current Account
Branch Name: Client Resolution Centre
Branch Code: 260231

Please use your name AND your cell number as a reference.

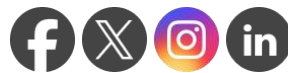
If your company is willing to pay for your membership please contact admin@gwii.co.za for an invoice to be made out to your company.

We will need:

- Company name;
- PO Box address; and
- VAT no if there is one.

BENEFITS OF BELONGING

- **Belong** to a dynamic, professional insurance industry association that promotes the personal and professional growth of women;
- **Share** your knowledge and expertise with industry peers and fellow members;
- **Participate** and build connections through networking at industry events;
- **Cultivate** professional self-confidence and personal friendships;
- **Learn** through speakers, workshops and articles designed to broaden your knowledge, enhance your position and meet professional needs; and
- **Give back** to the communities that we serve through our charity initiatives at our events.



Designed with BEE

[Unsubscribe](#) • [Update Profile](#) • [View PDF](#) • [Pause Subscription](#) • [View Online](#)

This email was sent to admin@gwii.co.za on 03-06-2024 by Gauteng Women In Insurance, 16A Wag 'n Bietjie Street Wilropark Roodepoort, Gauteng, 1724

Gauteng Women In Insurance is intended for opt-in communication only. If you feel this email is unsolicited please [report it](#) to us

Email Powered By Everlytic
