



WOMEN TO WOMEN

NEWSLETTER



Promoting the networking of women who work in the short-term insurance industry in Gauteng, South Africa.



GWII Leaderwalk: Managing Chaos and Order

On May 8, 2025, Gauteng Women In Insurance (GWII) hosted a thought-provoking Leaderwalk session on *Managing Chaos and Order* at The Venue Green Park in Sandton. The event was centred around the powerful insights shared by our distinguished speaker, *Huntley Smith*, a Change Architect, management consultant, and Brazilian jiu-jitsu black belt... [Read more](#)



Women's health in crisis: The rights we're still fighting for

From dismissed menstrual pain to inaccessible contraception and delayed cancer diagnoses, women across South Africa are still fighting for basic health rights. Dr Moratwe Masima and Profmed's Clinical Executive Justine Lacy call for a radical reimagining of how we prioritise... [Read more](#)

How women can break barriers in insurance – and boost the bottom line

About two years after the release of Greta Gerwig's Barbie movie, the sentiment that, 'women can be anything', although depicted in an imaginary world, rings just as true. However, reality still often falls short, as a lack of representation in senior roles can make it challenging for women to envision themselves in diverse career paths, especially in traditionally...

[Read more](#)

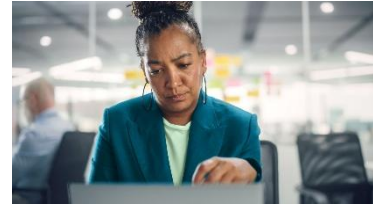


Women's advances and obstacles in financial services

In 1994, complete political transformation happened in South Africa at the breathtaking rate of a revolution. In the 30 years since, it feels as though it's been a long, persistent struggle to achieve even a small amount of the social and economic change the country needs. This includes the imperative for gender equity and parity in the workplace... [Read more](#)

Breaking the silence: menopause in the modern workplace

Menopause remains one of the least discussed yet most impactful phases in a woman's life, particularly in the workplace. For too long, the challenges that come with menopause - hot flashes, cognitive shifts, fatigue, and mood fluctuations... [Read more](#)



All about financial wellness: how it affects your health

When it comes to money, having enough is certainly important. But true financial wellness is about more than just your profit-and-loss statement. It's also about how you relate to money, how you handle financial stress, and how well you communicate these things when necessary. To help you improve your financial wellness, several financial therapists... [Read more](#)

Breaking barriers: tackling mental health stigma and expanding access to care in South Africa

Mental health remains one of the most under-addressed health challenges in South Africa, especially among black and rural women. Despite growing awareness campaigns, mental illness continues to be heavily stigmatised, with far-reaching implications for individuals, families, workplaces, and communities. As the insurance sector increasingly... [Read more](#)





Legal talk: Legal Advice for Getting Engaged

With equal parts nervousness and excitement, and the butterflies in your stomach fluttering faster and faster, you seriously consider taking your relationship to the next level. Of course, it's more than just getting down on one knee and popping the question. So obtaining tips and legal advice for getting engaged in South Africa is essential... [Read more](#)



[SEE THE 2025 CALENDAR HERE](#)

UPCOMING EVENTS

Vibe & Venture 2 - Golf Masterclass

11 June

DATE
11 JUNE 2025

TIME
11am – 8pm

VENUE
WORLD OF GOLF
Woodmead &
Saxwell Drive
Waterfall, Midrand

DRESS CODE
Active wear

ENTRANCE
R495 PP
Golf clubs will be provided

Rsvp
11 JUNE 2025
ad@wii.co.za

VIBE & VENTURE

Discovery
This event provides a unique opportunity for women in the insurance industry to learn a new skill, improve their game, make connections with other professionals, and have fun on the golf course.

TERRITORY
UNDERWRITING MANAGERS

ENVIROSURE
UNDERWRITING MANAGERS

RMA

CONSORT
GARRUN GROUP

genoa
Underwriting Managers

santam

COMPLIMENTARY SPONSORS

RENASAS
INSURANCE BROKER

SURE
SAFETY IN MOTION

GLASFIT
We fit the best, best.

GUARDRISK
TAILORED RISK SOLUTIONS

Leaderwalk 2

17 July



WHY WE MUST INVEST IN SOCIAL CHANGE



**GWII LEADERWALK
SERIES PRESENTS**



This talk explores how investing in social change can be a smart business strategy and not just an act of goodwill. In today's fast-changing world, challenges like social inequality, global health crises, and climate disruptions aren't just social issues anymore but they're business risks. And tackling them requires collective leadership from Government, the private sector and civil society.

ABOUT THE LEADERWALK CONCEPT

The Leaderwalk has been created by Business Engage to nurture the development of aspiring leaders and to help them unlock their future potential. This is done during an event that will encourage meaningful engagement and dialogue.

EVENT 17 JULY 2025

VENUE: The Venue Summit Place - 39 Melrose Boulevard, 39 Melrose Boulevard, Ground Floor, Melrose Arch

AGENDA

- 09:00 - 10:00 Registration and breakfast
- 10:00 - 10:05 Welcome & housekeeping
- 10:10 - 10:50 Keynote address and activities
- 10:50 - 11:00 Q&A
- 11:05 - 11:45 Breakaway session
- 11:45 - 12:00 Session feedback
- 12:00 Closing and thank you

RSVP admin@gwii.co.za



MEET DR NONKULULEKO BOIKHUTSO

Dr Nonkululeko Boikhutso is a public health physician and healthcare executive with two decades of experience in clinical operations, hospital governance, and health systems leadership. She currently serves as the Chief Executive Officer of the Nelson Mandela Children's Hospital, where she leads the strategic and operational transformation of one of Africa's specialist paediatric hospitals.

A cancer survivor herself, Dr Boikhutso is driven by a deep personal commitment to healthcare equity and the power of compassionate leadership. Her career spans the public and private sectors—including clinical management roles at Charlotte Maxeke Johannesburg Academic Hospital and policy advisory work at Discovery Health.

MAIN SPONSORS



CO-SPONSOR



TABLE SPONSOR



In collaboration with



Networking Event 2 (Ladies Day)

7 August



GAUTENG WOMEN IN INSURANCE

WOMEN'S DAY

HONOURING THE LEGACY
AND CELEBRATING THE RISE

INSURANCE INSTITUTE OF GAUTENG
Engage. Connect. Grow.

Depth of her Power

7 AUGUST
14:00 - 18:00

VENUE
THE POLO ROOM @ INANDA CLUB, 1 FORREST RD, CHISLEHURSTON, SANDTON

DRESS CODE
THE COLOURS OF THE OCEAN

ENTRANCE FEE
R150 FOR OUR NOMINATED CHARITY

THIS IS SHE

#2025&Alive

SAVE THE DATE

DIAMOND SPONSOR



PLATINUM SPONSOR



25 June

CPD 4

23 July

CPD 5

27 August

Vibe & Venture 3

11 September

Trailblazers Leaderwalk 2

18 September

2025 GWII MEMBERSHIP

The GWII membership for 2025 is R420. Should you wish to pay the membership fee of R420, our account details are as follows:

Account Name: G W I I Group NPC

Banker: FNB

Account No: 62436595691

Account Type: Current Account

Branch Name: Client Resolution Centre

Branch Code: 260231

Please use your name AND your cell number as a reference.

If your company is willing to pay for your membership please contact admin@gwii.co.za for an invoice to be made out to your company.

We will need:

- Company name;
- PO Box address; and
- VAT no if there is one.

BENEFITS OF BELONGING

- Belong to a dynamic, professional insurance industry association that promotes the personal and professional growth of women;
- Share your knowledge and expertise with industry peers and fellow members;
- Participate and build connections through networking at industry events;
- Cultivate professional self-confidence and personal friendships;
- Learn through speakers, workshops and articles designed to broaden your knowledge, enhance your position and meet professional needs; and
- Give back to the communities that we serve through our charity initiatives at our events.



[Designed with BEE](#)

[Unsubscribe](#) • [Update Profile](#) • [View PDF](#) • [Pause Subscription](#) • [View Online](#)

This email was sent to admin@gwii.co.za on 02-06-2025 by Gauteng Women In Insurance, 16A Wag 'n Bietjie Street Wilropark Roodepoort, Gauteng, 1724

[Gauteng Women In Insurance](#) is intended for opt-in communication only. If you feel this email is unsolicited please [report it](#) to us

Email Powered By [Everlytic](#)

